

# Covidien ClosureFast™

## Endovenous Radiofrequency Ablation (RFA) Catheters

When it comes to treating Chronic Venous Insufficiency (CVI), only the Covidien ClosureFast™ catheters utilize a segmental ablation technique to emit uniform and repeatable heat at specific increments within the affected vessel. Available with 7cm and 3cm heating elements.

*The Venefit™ procedure, delivered by the Covidien ClosureFast™ catheters.*



**Venefit™**

Targeted Endovenous Therapy

# The Venefit™ procedure, delivered by the Covidien ClosureFast™ Catheters

## Effective Treatment of CVI with Rapid Patient Relief and Recovery<sup>1,2</sup>

The Venefit™ procedure is a minimally invasive radiofrequency (RF) ablation procedure that uses the Covidien ClosureFast™ endovenous radiofrequency ablation (RFA) Catheter to collapse and close enlarged leg veins in patients with varicose veins and Chronic Venous Insufficiency (CVI).

### SEGMENTAL ABLATION TECHNOLOGY™

The Covidien ClosureFast™ catheters eliminate the need for continuous pull-back of the energy source as in the case of laser ablation allowing for more controlled and repeatable radiofrequency ablation and consistent, reproducible delivery of energy.

### EFFICACY RATE<sup>2</sup>

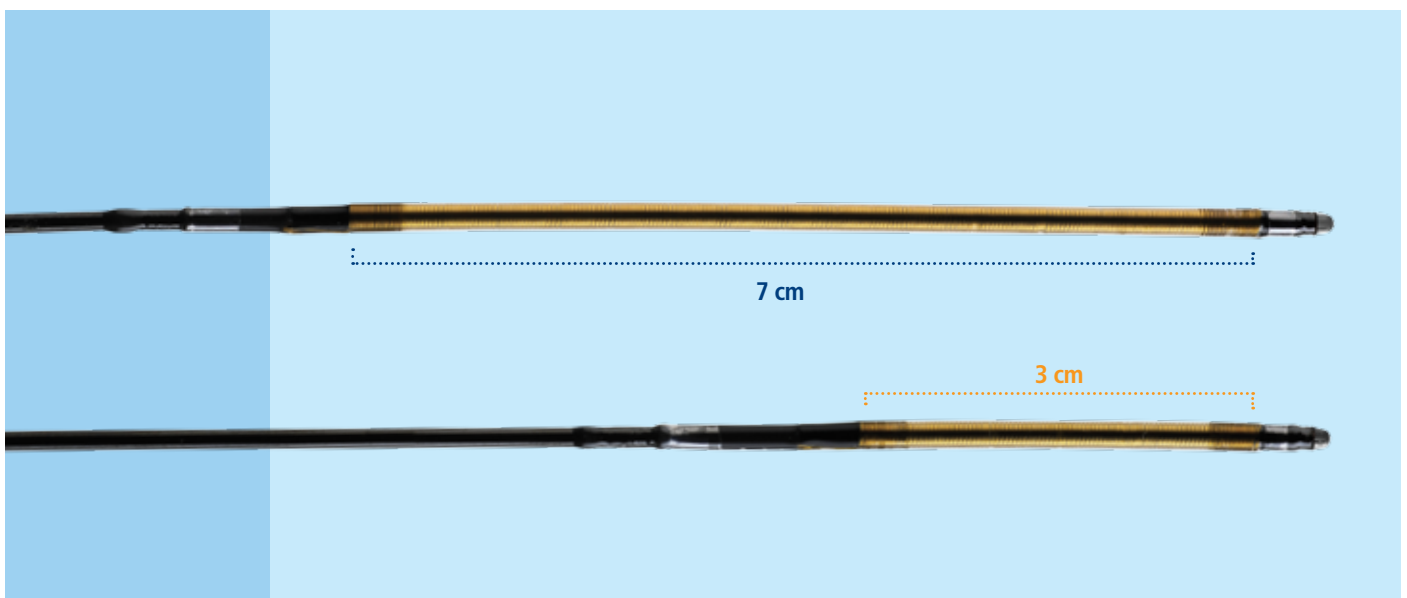
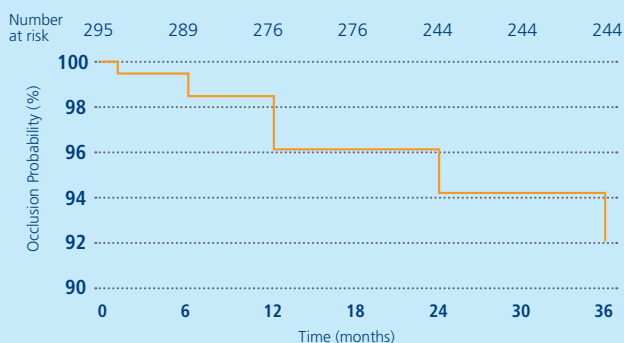
93% at three years

### RECOVERY TRIAL RESULTS<sup>1</sup>

Compared with a 980nm laser ablation, the Covidien ClosureFast™ catheter demonstrated statistically significant results:

- Faster improvement in patients' Venous Clinical Severity Scores (VCSS)
- Up to four times faster improvement in patients' quality of life based on CVI Quality of Life Questionnaire, Version 2 (CVIQ2)
- Less pain and bruising
- Fewer complications

### Kaplan-Meier Analysis: Long-term Probability of Vein Occlusion Utilizing Endovenous Radiofrequency Ablation<sup>2</sup>



## Covidien ClosureFast™ 3cm Endovenous Radiofrequency Catheter

Shorter segmental ablation with the versatility to treat the shorter superficial refluxing veins.

### FEATURES

- Utilizes the same technology as the Covidien ClosureFast™ endovenous radiofrequency ablation (RFA) Catheter with a 3cm heating element
- Ideal for the treatment of shorter vein segments with the ability to treat longer veins
- Compatible with the Covidien ClosureRFG™ radiofrequency generator\*

### ClosureFast™ Catheters Ordering Information

Order#	Description	Working Length	Heating Element Length	Compatible Guidewire
CF7-7-60	7F Covidien ClosureFast™ catheter	60cm	7cm	0.025"
CF7-7-100	7F Covidien ClosureFast™ catheter	100cm	7cm	0.025"
CF7-3-60*	7F Covidien ClosureFast™ 3cm catheter	60cm	3cm	0.025"

\* ClosureRFG™ software version 4.4.0 or higher is required.

All Covidien Venefit™ procedure products are latex free.

**INDICATION:** The Covidien ClosureFast™ catheter is intended for endovascular coagulation of blood vessels in patients with superficial venous reflux.

**CONTRAINDICATIONS:** Patients with thrombus in the vein segment to be treated.

**CAUTION:** The vein wall may be thinner in an aneurysmal segment. To effectively occlude a vein with an aneurysmal segment, additional tumescent infiltration may be needed over the aneurysmal segment, and the treatment of the vein should include segments proximal and distal to the aneurysmal segment.

**CAUTION:** No data exists regarding the use of this catheter in patients with documented peripheral arterial disease. The same care should be taken in the treatment of patients with significant peripheral arterial disease as would be taken with a traditional vein ligation and stripping procedure.

**POTENTIAL COMPLICATIONS:** Potential complications include, but are not limited to, the following: vessel perforation, thrombosis, pulmonary embolism, phlebitis, infection, adjacent nerve injury, skin burn, hematoma or discoloration.



<sup>1</sup> Almeida JJ, Kaufman J, Göckeritz O, et al. Radiofrequency Endovenous ClosureFast Versus Laser Ablation for the Treatment of Great Saphenous Reflux: A Multicenter, Single-Blinded, Randomized Study (RECOVERY Study). *J Vasc Interv Radiol*. 2009;20:752-759.

<sup>2</sup> Proebstle T, et al. Three-year European follow-up of endovenous radiofrequency-powered segmental thermal ablation of the great saphenous vein with or without treatment of calf varicosities. *JVS*; July 2011.

# Covidien ClosureRFG™ Radiofrequency Generator

Advanced Radiofrequency Generator for Venefit™ Targeted Endovenous Therapy

## FEATURES

### Continuous Feedback

Real-time temperature feedback control

Display or power delivered to achieve set temperature

### Intuitive User Interface

Simple, quick viewing of treatment parameters

Color gauges indicate treatment parameter range

### Large Color Screen

Intuitive screen layout with distinct functional areas

Easy to see

### Ergonomic Console

Backlit control buttons provide clear visibility in a darkened room

Built-in handles for easy lifting and carrying

Convenient holder for power cord

### Audible Tones

Alert tones with adjustable volume

Different tones indicate separate functions

### Warranty

One year manufacturer's warranty

Extended warranty programs available



## Covidien ClosureRFG™ Ordering Information

Order #	Description	Voltage
RFG2	ClosureRFG™ generator	Universal (100-240 V)

All Covidien Venefit™ procedure products are latex free.



For use by physicians only

COVIDIEN, COVIDIEN with logo and Covidien logo are U.S. and internationally registered trademarks of Covidien AG. Other brands are trademarks of a Covidien company. ©2012 Covidien.

VTH0380 01/12

COVIDIEN (UK) COMMERCIAL LTD  
4500 PARKWAY, WHITELEY  
FAREHAM, HAMPSHIRE  
PO15 7NY  
UNITED KINGDOM

+44 (0) 203 027 1757 [T]  
+44 (0) 203 027 1758 [F]  
UKSALES@COVIDIEN.COM [E]

WWW.COVIDIEN.COM  
WWW.VENEFITPROCEDURE.COM